

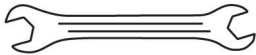
Standard 3" Round In-Ground Mailbox Post (Model 7516) Assembly Instructions

Thank you for purchasing this premium mailbox post. We know you'll be satisfied with the years of service it will provide. If you have any questions about how to assemble or install this product, or if you need any replacement parts, please call us directly at (800) 824-9985 or contact us at www.mailboxworks.com

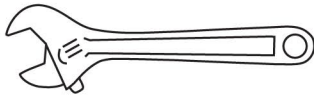
Assembly Instructions

Tools

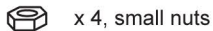
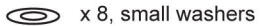
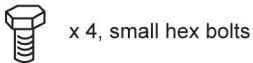
Two Crescent or Open End Wrenches
(not included)



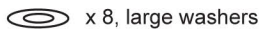
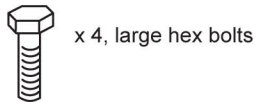
- or -



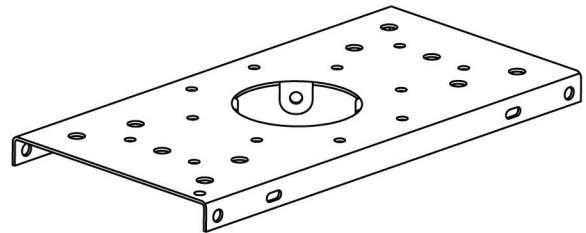
Hardware



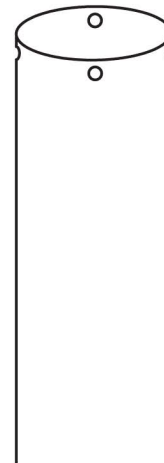
To attach the mailbox to the post:



- 1 Slide the Top Plate onto the Post end until the bolt holes are aligned.



- 2 Attach the Top Plate to the Post using the 4 small bolts.



- 3 The method for installing the mailbox onto the post and the post into the ground depends on the type of mailbox being used. Please refer to the instructions included with your mailbox for the remainder of the installation. Use the large bolts, nuts and washers to attach the mailbox to the post.

The **Mailbox Works**

www.mailboxworks.com (800) 824-9985