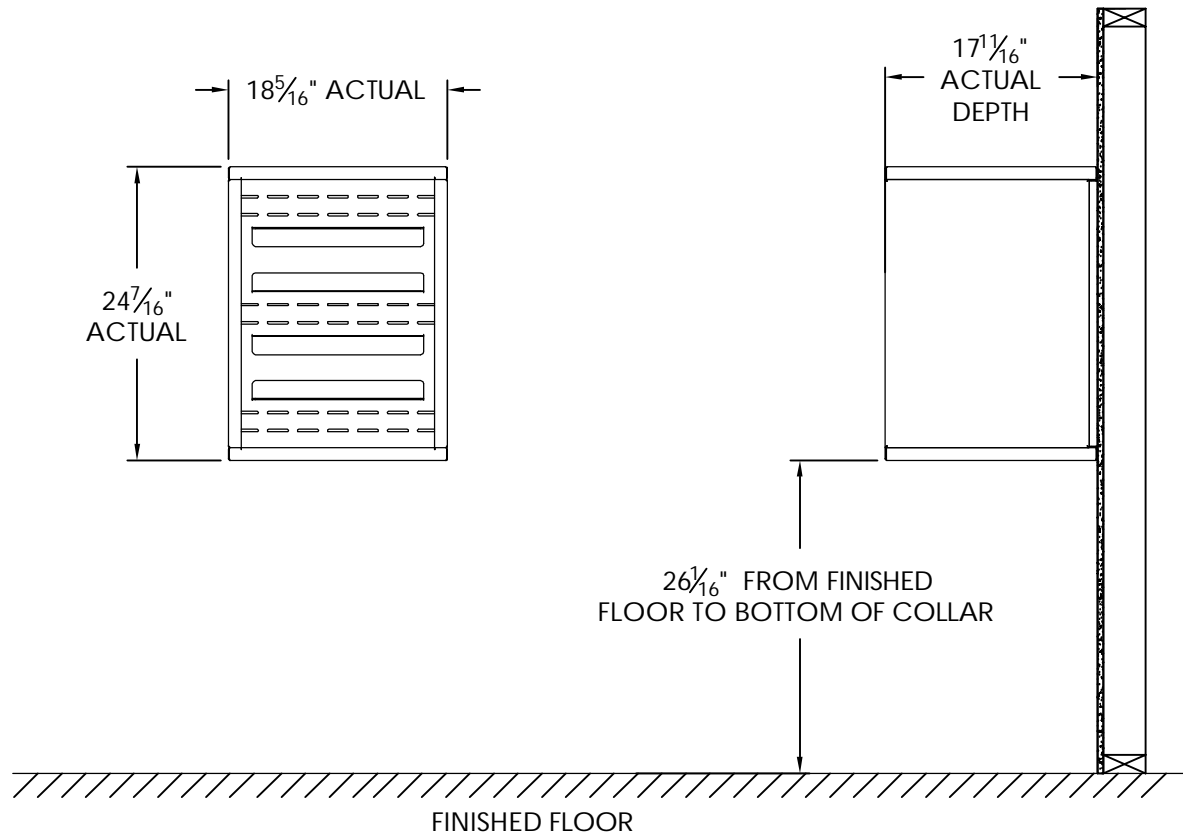


# versatile™ 4C Surface Mount Collar, SM06S



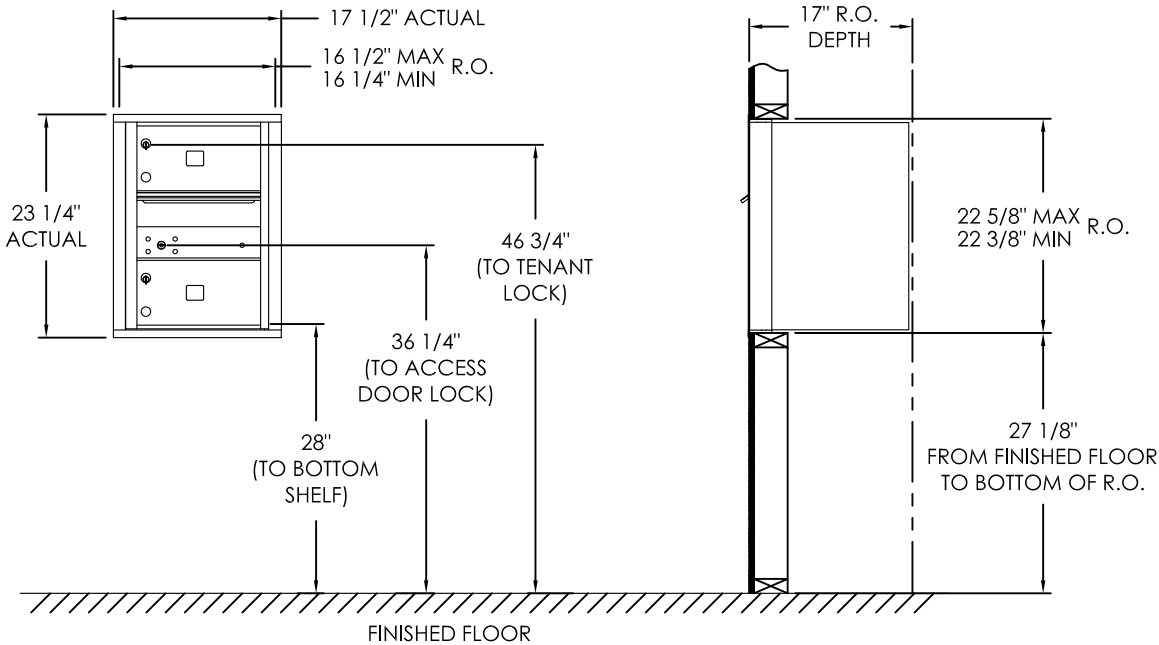
## Notes:

1. Designed to mount Florence Versatile™ 4C mailbox single column 6-High Suite modules (sold separately).
2. For use with front loading modules only.

PRODUCT SERIES: VERSATILE™ 4C SURFACE MOUNT COLLAR

MODEL	SM06S	REV	B
SCALE	NONE	LAST REV DATE	7/02/2014
DRAWING NUMBER	SM06SCS	DRAWN BY	TNS

versatile™ 4C Mailbox, 4C06S-02



COMPARTMENT CHART

DESCRIPTION	COMPARTMENT	COMPARTMENT SIZE	QTY.
MAILBOX	MB2	6-1/2" H x 12" W x 15" D	2
OUTGOING MAIL	OM2	6-1/2" H x 12" W x 15" D	1

Notes:

- This module meets the USPS STD-4C requirements for installation defined below when the mailbox is installed per the dimensions provided on this drawing.
  - At least one customer compartment shall be positioned less then 48" above finished floor (AFF).
  - No parcel locker (interior bottom shelf) shall be positioned less than 15" AFF.
  - No patron (tenant) lock shall be positioned more than 67" AFF.
  - No customer compartment (interior bottom shelf) shall be positioned less than 28" AFF.
  - The USPS Arrow lock shall be positioned 36"- 48" AFF.
- This 4C mailbox can also be used for private applications.
- The rough opening width for multi-unit 4C installations is provided using the Florence configurator: [www.florencemailboxes.com/configurator](http://www.florencemailboxes.com/configurator).

PRODUCT SERIES: VERSATILE™ 4C FRONT LOAD MAILBOX

	MODEL	4C06S-02	REV	C
	SCALE	NONE	LAST REV DATE	06/28/19
	DRAWING NUMBER	4C06S-02CS	DRAWN BY	RAK